

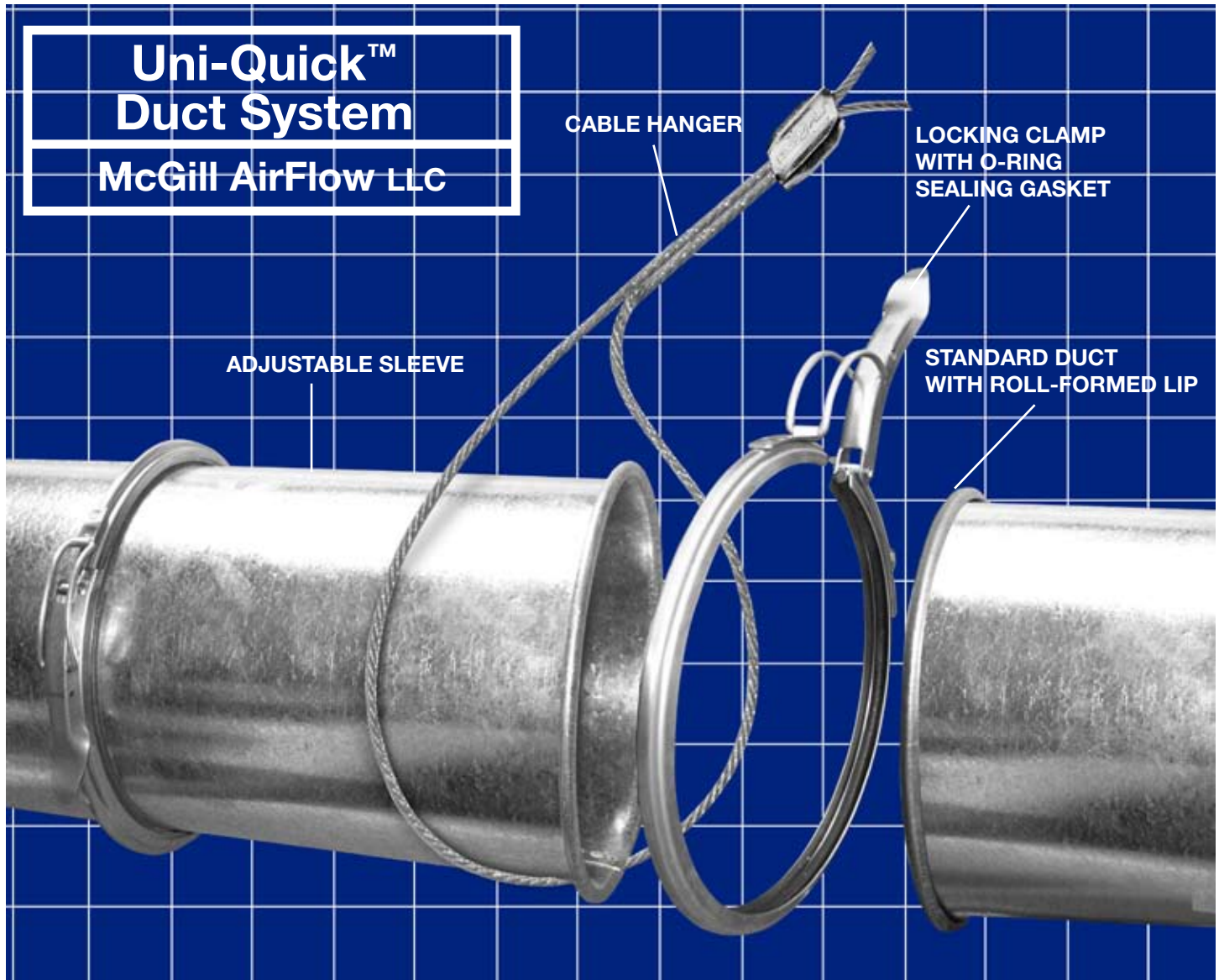
**McGill AirFlow LLC**

An enterprise of United McGill Corporation —  
Family owned and operated since 1951

# Uni-Quick™ Moveable Duct System

DUST COLLECTION and MATERIAL  
HANDLING APPLICATIONS

a McGill AirFlow™ product



McGill AirFlow's Uni-Quick™ moveable duct system lowers the cost of installation and minimizes downtime when moving dust collection and material conveying duct systems. The Uni-Quick duct system is designed to quickly assemble, disassemble, and reassemble to meet changing application requirements. Standard construction is applicable for +10 to -30 wg systems. Contact McGill AirFlow for applications exceeding those conditions.

Comprised of round sheet metal duct with standard roll-lipped ends, the Uni-Quick duct system is supplied in standard and heavy gauge metal. Elbows (pleated, welded, and tube), branches (single and double), T- and Y-connectors, in-cuts, and cut-offs enable designers to develop optimal configurations.

Various adapters and reducers, butterfly valves, floor sweeps, ball joints, and flex hoses are easily connected, quickly and securely, using a reusable, all welded, stainless steel snap-on clamp with an o-ring sealing gasket. Blast gates with automatic controls permit tuning configurations to application-specific airflow requirements. Radial arm hoods, No-Loss stack heads, bell-mouths, in-line back blasts, and vibration dampers are available to meet all requirements. Standard o-ring sealing gaskets are made from Buna-N, which is temperature resistant to a maximum of 250°F. Other o-ring sealing gasket materials include hi-temp red silicone (max 500°F), and FDA food-grade rubber, Goretex®, and Viton® for oil mist applications (all max 250°F).

Standard round duct in five-foot lengths is offered in 3- to 22-inch (except 21 inches) diameters in one-inch increments in galvanized or stainless steel.

Adjustable sleeve pipe assemblies maximize flexibility for challenging system configurations. The standard adjustable sleeves are 11 inches long and provide 11 to 18 inches of adjustment. Clamp-on connectors with rubber o-ring sealing gaskets ensure airtight seals.

Duct systems are suspended using hangers made from woven-wire cable, which is offered in three load-measured gauges. Hangers are quickly attached using hardened, self-locking metal grips.



## Uni-Quick Duct and Fittings – Available Sizes, Materials, and Thicknesses

Component	Diameters and Configurations	Materials	Gauges
Standard Duct 5-foot lengths	3-22 inches (except 21) in 1-inch increments	Galvanized or Stainless Steel	26-20
Adjustable Sleeve Pipe Standard 11 inches	3-22 inches (except 21) in 1-inch increments	Galvanized or Stainless Steel	26-20
Clamp	3-22 inches (except 21) in 1-inch increments	Stainless Steel	-
Elbow – Tubed	3, 4, 5, 6, 8 inches with standard (1.5) or long (2.5) radii and 45° or 90° bends	Galvanized or Stainless Steel	14
Elbow – Stitch Welded	3-12 inches in 1-inch increments with standard radius (1.5) and 45° or 90° bends	Galvanized	22
Elbow – Segmented	7-22 inches (except 21) in 1-inch increments with standard (1.5) or long (2.5) radii and 30°, 45°, 60°, or 90° bends	Galvanized or Stainless Steel	20-18
Elbow – Pleated, Non-Welded and Welded	3-15 inches in 1-inch increments with standard (1.5) or long (2.5) radii and 30°, 45°, 60°, or 90° bends	Galvanized	22-20
Branch – Tee on Taper	3-22 inches (except 21) in 1-inch increments with 30°, 45°, or 90° angles	Galvanized or Stainless Steel	18
Double Branch – Tee on Taper	3-22 inches (except 21) in 1-inch increments with 30°, 45°, or 90° angles	Galvanized or Stainless Steel	18
Y Branch	3-22 inches (except 21) in 1-inch increments with 30°, 45°, or 90° angles	Galvanized or Stainless Steel	18
In-Cut	3-22 inches (except 21) in 1-inch increments 30°, 45°, or 90° angles	Galvanized or Stainless Steel	18
Cut-Off	3-22 inches (except 21) in 1-inch increments with 30°, 45°, or 90° angles, full or half	Cast Aluminum Frame, Galvanized or Stainless Steel Blades	-
Blast Gate – Airtight	3-22 inches (except 21) in 1-inch increments	Galvanized or Stainless Steel	14
Adapter – Straight	3-22 inches (except 21) in 1-inch increments, 5 inches long	Galvanized or Stainless Steel	20-24+
Adapter – Flanged	3-22 inches (except 21) in 1-inch increments	Galvanized or Stainless Steel	20-24+
Adapter – Hose	3-22 inches (except 21) in 1-inch increments, 5 inches long	Galvanized or Stainless Steel	20-24+
Reducer	3-22 inches (except 21) in 1-inch increments	Galvanized or Stainless Steel	20
Butterfly Valve	3-22 inches (except 21) in 1-inch increments, 11 inches long	Galvanized or Stainless Steel	20-24+
Rectangular-to-Round Transition	3-22 inches (except 21) in 1-inch increments	Galvanized or Stainless Steel	20-18
Floor Sweep	4-8 inches in 1-inch increments	Galvanized or Stainless Steel	18

## Uni-Quick Duct and Fittings – Available Sizes, Materials, and Thicknesses (continued)

Component	Diameters and Configurations	Materials	Gauges
Ball Joints	3-12 inches in 1-inch diameter	Galvanized	–
End Cap – Closed End or Bird Screen	3-22 inches (except 21) in 1-inch increments	Galvanized or Stainless Steel	–
Rubber Flex Hose	2, 2.5, 3-10 inches in 1-inch increments, and 12-24 inches in 2-inch increments	Black or Clear Rubber	–
Steel Flex Hose – Rigid	2, 2.5, 3-10 inches in 1-inch increments, and 12 inches	Steel	–
Steel Flex Hose – Flexible	3-8 inches (except 7) in 1-inch increments	Steel	–
Hose Clamp	2, 3, 4, 5, 6, 8, 10, 12 inches	Steel	–
Radial Arm Hood	4, 5, and 6 inches	Galvanized	18
No-Loss Stack Head	4-22 inches (except 21) in 1-inch increments	Galvanized or Stainless Steel	24-20
Vibration Dampener	4-10 inches in 1-inch increments and 12-30 inches in 2-inch increments	Galvanized or Stainless Steel	20
Bellmouth (short radius)	4-22 inches (except 21) in 1-inch increments	Galvanized or Stainless Steel	18
Diverter Valve – Manual or Automatic	4-22 inches (except 21) in 1-inch increments	Galvanized	–
Saddle	4-22 inches (except 21) in 1-inch increments	Galvanized or Stainless Steel	16-14
Hanger	Sizes 3-5 Includes 15-foot cable, 1 gripper and release pin (Additional accessories available)	Steel	–

## Uni-Quick Duct and Fittings



Standard  
Standard Duct 5-Foot Lengths



Elbow – Pleated,  
Non-Welded and Welded



Adjustable Sleeve Pipe  
Standard length: 11 inches



Blast Gate – Airtight



Floor Sweep

**Uni-Quick Duct and Fittings (continued)**



Branch - Tee on Taper



Double Branch - Tee on Taper



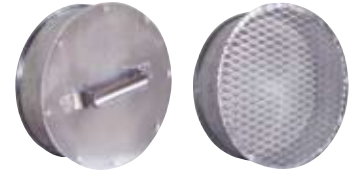
Standard Adapter  
Flanged Adapter



Clamp



Adapter - Hose



Closed End End Cap  
Bird Screen End Cap



Ball Joint



Elbow - Tubed



Butterfly Valve



Reducer



In-Cut



Elbow - Stitch Welded



Y Branch

Full Cut-Off



Rubber Flex Hose



Steel Flex Hose  
Available Rigid



Elbow - Segmented

Half Cut-Off



Rectangular-to-Round Transition



Hose Clamp



Bell Mouth  
(short radius)

Cut-Offs

## Uni-Quick Duct and Fittings (continued)



Radial Arm Hood



Diverter Valve –  
Manual or Automatic



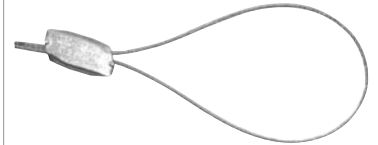
No Loss Stack Head



Vibration Dampener



Saddle



Hanger

The products depicted in this data sheet were current at the time of publication. As a quality-conscious manufacturer, McGill AirFlow continually seeks ways to improve its products to better serve its customers. Therefore, all designs, specifications, and product features are subject to change without notice.

United McGill™ and McGill AirFlow™ are trademarks of United McGill Corporation.

Goretex® is a registered trademark of W.L. Gore, Inc.

Viton® is a registered trademark of DuPont Dow Elastomers.

# McGill AirFlow LLC

An enterprise of United McGill Corporation —  
Family owned and operated since 1951

One Mission Park  
Groveport, Ohio 43125-1149  
614/829-1200, Fax: 614/829-1291  
E-mail: [marketing@mcgillairflow.com](mailto:marketing@mcgillairflow.com)  
Web site: [www.mcgillairflow.com](http://www.mcgillairflow.com)