

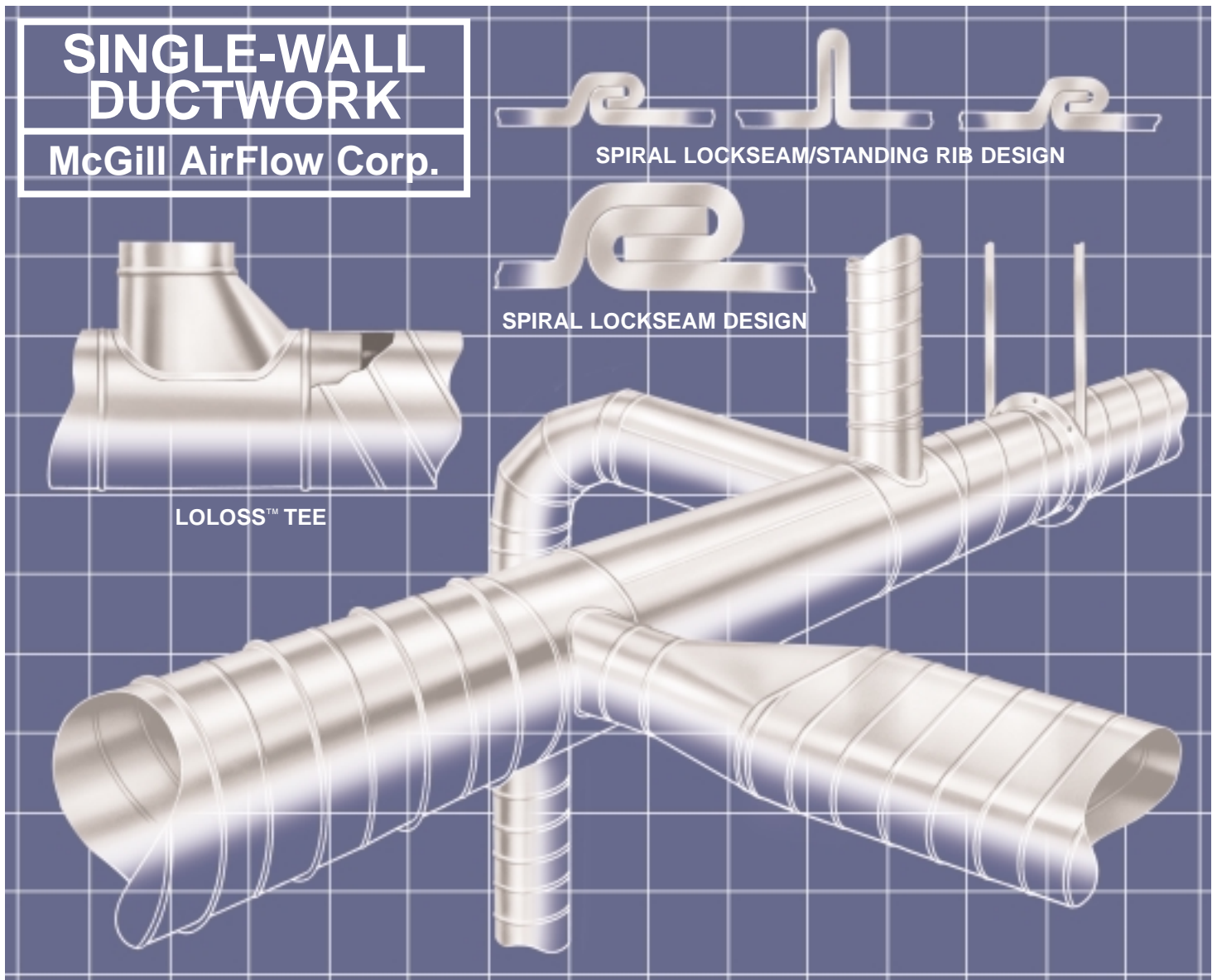


An enterprise of United McGill Corporation —  
Founded in 1951

# Single-Wall, Round and Flat Oval Duct and Fittings

SINGLE-WALL DUCTWORK  
and SINGLE-WALL DUCTWORK  
with ACOUSTI-LINE™ LINER

a McGill AirFlow™ product



# Single-Wall, Round Duct

McGill AirFlow Corporation's single-wall, round duct is fabricated to exacting tolerances that make it easy to assemble and essentially leak free. Round duct costs less to install than rectangular duct and because of its efficiency, a round duct system offers lower operating costs. Three standard types of single-wall, round duct are available: spiral lockseam, spiral lockseam with a standing rib, and longitudinal seam.

Spiral lockseam duct is constructed with an interlocking helical seam that runs the length of the duct. The lockseam is formed on the outside of the duct, providing a smooth interior that results in minimal friction loss. This seam increases the duct's structural strength and rigidity so that it can be used in lighter gauges than rectangular or longitudinal seam duct, making it less expensive, easier to handle, and easier to install. Another factor which makes spiral lockseam duct economical is that it can be fabricated in lengths of 20 feet or greater. These longer sections of duct mean fewer joints and faster installation.

Spiral lockseam duct is available with a standing rib. This external stiffening rib gives the duct strength and rigidity equal to that of heavier gauges of standard spiral lockseam duct.

Longitudinal seam duct is available for applications that require very heavy gauges or large diameters. The longitudinal seam of the duct is solid welded.

A pipelock construction is used for some lighter gauge duct (residential and light commercial) and some PVC-coated metal duct.

United McGill®, UNI-RIB®, and UNI-COAT® are registered trademarks, and McGill AirFlow™, LO-LOSS™, SILVERGUARD™, and UNI-SEAL™ are trademarks of United McGill Corporation.

## Round Duct — Available Sizes, Materials, and Thicknesses

Construction	Diameters <sup>1</sup>	Lengths <sup>2</sup>	Materials <sup>3,6</sup>	Thicknesses
<b>UNI-SEAL™</b> Duct (spiral lockseam)	3-84 inches	1-20 feet	Galvanized Steel	28-14 gauge
			Stainless Steel	26-20 gauge
	3-60 inches <sup>4</sup>		Aluminum	0.025-0.063 inch
<b>UNI-RIB®</b> Duct (spiral lockseam with standing rib)	9-60 inches	1-20 feet	Galvanized Steel	28-22 gauge
			Aluminum	0.025-0.050 inch
<b>Longitudinal Seam</b> Duct (solid welded)	8-90 inches <sup>5</sup>	1-6 feet	Galvanized Steel	20-10 gauge
			Stainless Steel	22-10 gauge
	8-60 inches <sup>4,5</sup>		Aluminum	0.040-0.090 inch

<sup>1</sup> McGill AirFlow's single-wall, round duct is available with the following diameters: 3-inch through 15-inch diameters in 1/2-inch-diameter increments, 16-inch through 38-inch diameters in 1-inch-diameter increments, and 40-inch through 90-inch diameters in 2-inch-diameter increments.

<sup>2</sup> Standard lengths of round UNI-SEAL and UNI-RIB duct are 10, 12, and 20 feet; longer lengths are available. Standard lengths of round longitudinal seam duct are 5 and 6 feet.

<sup>3</sup> Single-wall, round duct is also available in nongalvanized carbon steel and paintable galvanized steel. Stainless steel is generally type 304 or 316. Aluminum is generally type 3003-H14. UNI-COAT single-wall, round duct (polyvinyl-chloride-coated galvanized steel) is available on special order.

<sup>4</sup> Aluminum single-wall, round duct is available in diameters greater than 60 inches on special order.

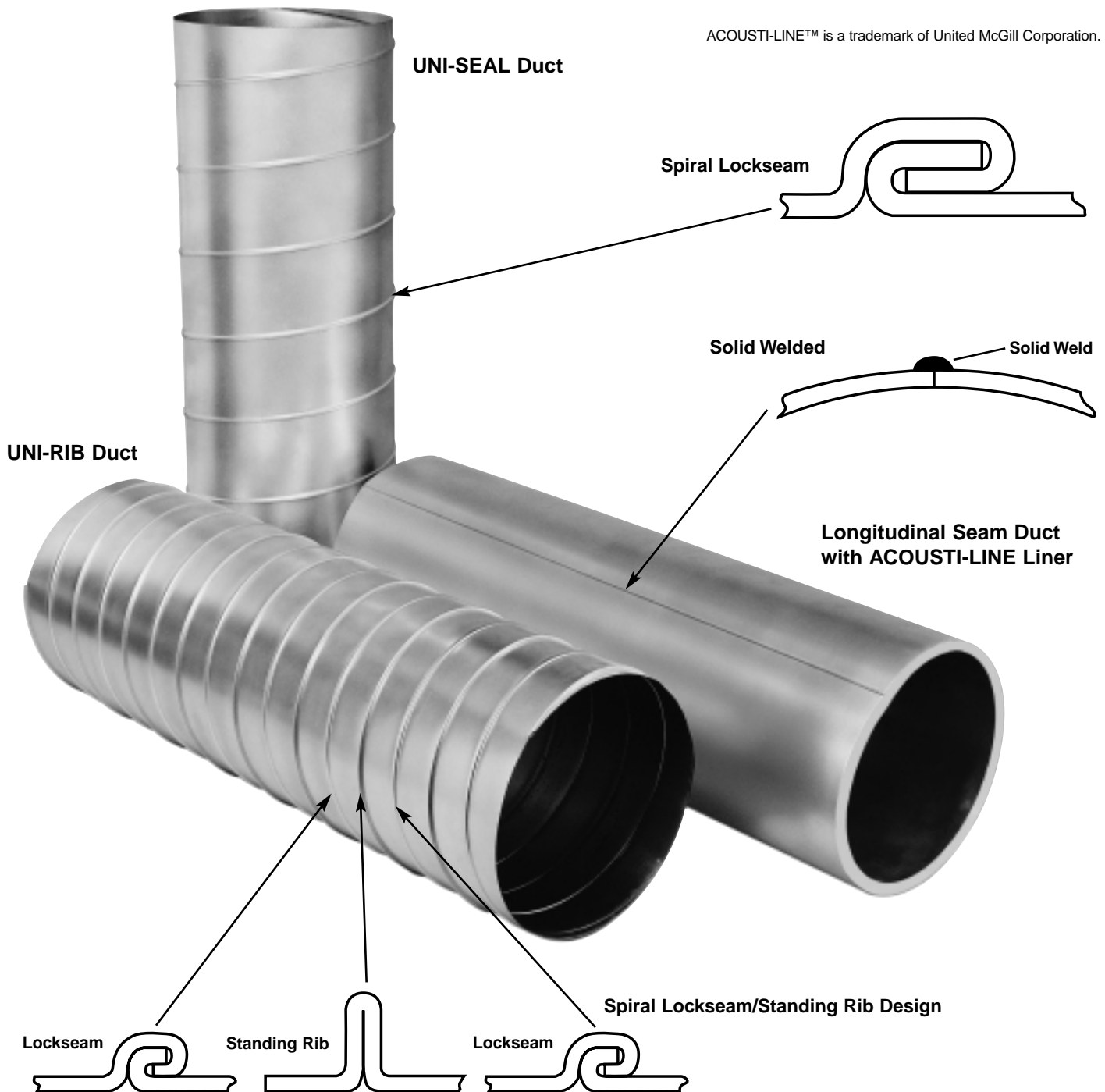
<sup>5</sup> Single-wall, round longitudinal seam duct is available in diameters smaller than 8 inches on special order.

<sup>6</sup> SilverGuard™ single-wall, round duct (pre-coated with an antimicrobial) is available on special order.

# Single-Wall, Round Duct with ACOUSTI-LINE™ Insulating Liner

Single-wall ductwork is available with an ACOUSTI-LINE insulating liner coated to protect against erosion and microbial growth. This acoustical/thermal liner can be used with air velocities up to 5,000 fpm and temperatures up to 250°F. It is available in thicknesses of 1 and 1½ inches and has a maximum thermal conductivity (k) factor of 0.24 Btu/hour/square foot/°F/inch thickness. Formulated with an anti-microbial agent that is EPA registered, the liner's acrylic coating resists the growth of fungus and bacteria (tested in accordance with ASTM C 1071 and ASTM G21 and G22). The liner's surface can be cleaned according to procedures detailed in the North American Insulation Manufacturers Association (NAIMA) Duct Cleaning Guide.

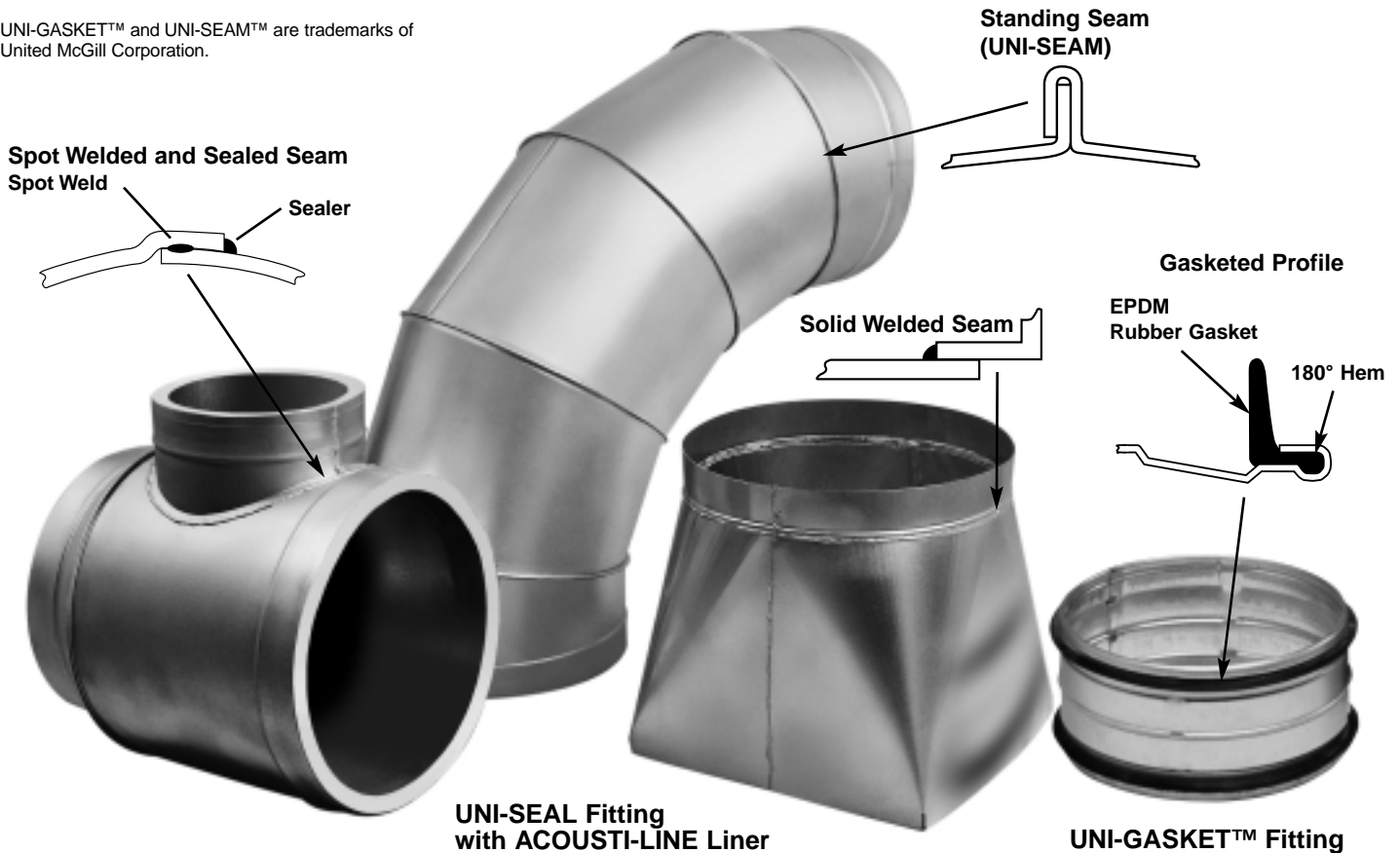
ACOUSTI-LINE™ is a trademark of United McGill Corporation.



# Single-Wall, Round Fittings

A complete line of fittings designed for low leakage and efficient performance is available for use with McGill AirFlow's single-wall, round duct. Each fitting is sized accurately to allow easy field assembly. Fittings are available in gasketed and non-gasketed profiles in solid welded, spot or tack welded and sealed, lap and riveted (or screwed) and sealed, and UNI-SEAM™ standing seam constructions. Single-wall, round fittings can be supplied with an ACOUSTI-LINE insulating liner to match our single-wall, round lined duct.

UNI-GASKET™ and UNI-SEAM™ are trademarks of United McGill Corporation.



## Round Fittings — Available Sizes, Materials, and Thicknesses

Construction	Diameters <sup>1</sup>	Materials <sup>2,5</sup>	Thicknesses
UNI-SEAL Fittings <sup>4</sup> (spot or tack welded and sealed, lap and riveted/screwed and sealed, solid welded, or standing seam)	3-90 inches	Galvanized Steel	26-10 gauge
		Stainless Steel	26-10 gauge
	3-60 inches <sup>3</sup>	Aluminum	0.032-0.090 inch
UNI-GASKET Fittings	3-24 inches <sup>6</sup>	Galvanized Steel	26-22 gauge

<sup>1</sup> Except as noted, McGill AirFlow's single-wall, round fittings are available with the following diameters: 3-inch through 15-inch diameters in 1/2-inch-diameter increments, 16-inch through 38-inch diameters in 1-inch-diameter increments, and 40-inch through 90-inch diameters in 2-inch-diameter increments.

<sup>2</sup> Single-wall, round fittings are also available in nongalvanized carbon steel and paintable galvanized steel. Stainless steel is generally type 304 or 316. Aluminum is generally type 3003-H14. UNI-COAT single-wall, round fittings (polyvinyl-chloride-coated galvanized steel) are available on special order.

<sup>3</sup> Aluminum single-wall, round fittings are available in diameters greater than 60 inches on special order.

<sup>4</sup> Fittings that are 16 gauge (Aluminum-0.090 inch) or heavier are fully welded.

<sup>5</sup> SilverGuard™ single-wall, round fittings (pre-coated with an antimicrobial) is available on special order.

<sup>6</sup> Except as noted, McGill AirFlow's single-wall, round UNI-GASKET fittings are available with the following diameters: 3-inch through 12-inch diameters in 1-inch-diameter increments, and 14-inch through 24-inch diameters in 2-inch-diameter increments.

## Single-Wall, Flat Oval Duct

For applications in which space restrictions prohibit the use of round duct, McGill AirFlow offers flat oval duct in spiral lockseam and longitudinal seam constructions. Flat oval duct provides a more efficient alternative to rectangular duct in these applications. McGill AirFlow manufactures flat oval duct with the same techniques used to make round duct. As a result, flat oval duct shares many of the performance characteristics of round duct. Compared with rectangular duct, it provides lower installation costs and, because of reduced leakage and pressure loss, lower operating costs.

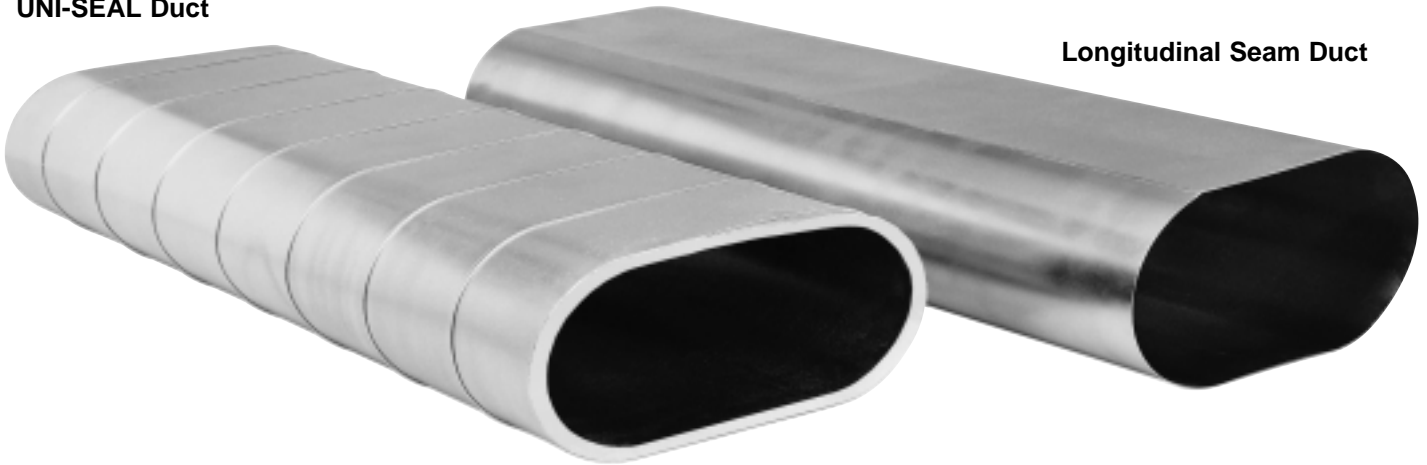
Spiral lockseam duct is constructed with an interlocking helical seam that runs the length of the duct. As with round spiral lockseam duct, the flat oval type combines efficient performance with a structural strength equal to that of heavier gauges of other types of duct.

Flat oval duct is available with a longitudinal seam construction for applications that require very heavy gauges or large sizes. The duct's longitudinal seam is solid welded.

A pipelock construction is used for some lighter gauge duct (residential and light commercial) and some PVC-coated metal duct.

**UNI-SEAL Duct**

**Longitudinal Seam Duct**



### Flat Oval Duct — Available Lengths, Materials, and Thicknesses

Construction	Lengths <sup>1</sup>	Materials <sup>2,3</sup>	Thicknesses
<b>UNI-SEAL Duct</b> (spiral lockseam)	1-12 feet	Galvanized Steel	28-18 gauge
		Stainless Steel	26-20 gauge
		Aluminum	0.025-0.063 inch
<b>Longitudinal Seam Duct</b> (solid welded)	1-6 feet	Galvanized Steel	20-10 gauge
		Stainless Steel	22-10 gauge
		Aluminum	0.040-0.090 inch

<sup>1</sup> Some standard sizes of flat oval UNI-SEAL duct are available only to lengths of 6 feet; longer lengths are available on special order. Standard lengths of flat oval longitudinal seam duct are 5 and 6 feet.

<sup>2</sup> Single-wall, flat oval duct is also available in nongalvanized carbon steel and paintable galvanized steel. Stainless steel is generally type 304 or 316. Aluminum is generally type 3003-H14. UNI-COAT single-wall, flat oval duct (polyvinyl-chloride-coated galvanized steel) is available on special order.

<sup>3</sup> SilverGuard™ single-wall, flat oval duct (pre-coated with an antimicrobial) is available on special order.



## Flat Oval Duct and Fittings — Available Size Ranges

Minor Axis (inches)	Major Axis (inches)		
	Minimum	Maximum Spiral Lockseam	Maximum Longitudinal Seam or Fitting Size
3	8	22	30
4	7	21	40
5	8	21	46
6	8	59	59
7	10	21	62
8	10	77	77
9	12	23	89
10	12	79	99
11	14	25	109
12	14	81	119
14	20	80	139
16	22	79	143
18	23	81	134
20	26	80	140
22	35	82	134
24	37	81	141
26	29	not available	137
28	31	not available	144
30	43	84	141
32	35	not available	139
34	37	not available	138
36	39	not available	136
38	41	not available	136
40	43	not available	143

Duct Express™ is a trademark of United McGill Corporation.

## Specifications

McGill AirFlow has prepared suggested specifications for duct and fitting products. These are available in McGill AirFlow's publication: *Recommended Specifications for Commercial and Industrial Round and Flat Oval Duct Systems*.

## Additional Information

Construction details, dimension drawings, and standard gauges for McGill AirFlow products are available. Please contact the McGill AirFlow sales representative, sales office, Duct Express™ outlet, or regional manufacturing plant nearest you.

The products depicted in this brochure were current at the time of publication. As a quality-conscious manufacturer, McGill AirFlow continually seeks ways to improve its products to better serve its customers. Therefore, all designs, specifications, and product features are subject to change without notice.

## Sales Engineering Offices, Manufacturing Plants, and Duct Express Outlets

### Alabama

□ 241 Lyon Lane  
Birmingham, AL 35211  
205/944-0034  
Fax: 205/944-0091  
birmingham@mcgillairflow.com

### Arizona

□ 1236 West Southern Avenue  
No. 105  
Tempe, AZ 85282  
480/966-2638  
Fax: 480/966-4850  
phoenix@mcgillairflow.com

### California

□ 1747 East Charter Way  
Stockton, CA 95205  
209/466-2351  
Fax: 209/941-2739  
californiaplant@mcgillairflow.com

### Colorado

□ 4920B Fox Street  
Denver, CO 80216  
303/297-8307  
Fax: 303/297-8309  
denver@mcgillairflow.com

### Connecticut

□ 15E International Drive  
East Granby, CT 06026  
860/653-8001  
Fax: 860/653-6995  
hartford@mcgillairflow.com

### Florida

□ 4408 SW 36th Street  
Orlando, FL 32811  
407/648-4999  
Fax: 407/648-0061  
orlandoplant@mcgillairflow.com

□ 4270 L B McLeod Road  
Orlando, FL 32811  
407/841-7953  
Fax: 407/423-8975  
orlando@mcgillairflow.com

□ 3406 SW 26 Terrace  
No. C-10  
Ft. Lauderdale, FL 33312  
954/321-5898  
Fax: 954/321-5788  
ft.lauderdale@mcgillairflow.com

Colonial Plaza Office Complex  
6251 Phillips Highway  
No. 3  
Jacksonville, FL 32216  
904/733-3868  
Fax: 904/733-3978  
jacksonville@mcgillairflow.com

□ 6203 Johns Road  
No. 12  
Tampa, FL 33634  
813/888-8803  
Fax: 813/888-8831  
tampabay@mcgillairflow.com

### Georgia

□ 1750 Enterprise Way  
No. 108  
Marietta, GA 30067  
770/541-1843  
Fax: 770/541-0737  
atlanta@mcgillairflow.com

### Illinois

125 Windsor Drive  
No. 103  
Oak Brook, IL 60523  
630/572-1293  
Fax: 630/572-1310  
chicago@mcgillairflow.com

2001 West Willow Knolls Drive  
No. 201  
Peoria, IL 61614  
309/692-2085  
Fax: 309/691-1508  
peoria@mcgillairflow.com

### Indiana

□ 3880 Pendleton Way  
No. 700  
Indianapolis, IN 46226  
317/541-1530  
Fax: 317/541-1536  
indianapolis@mcgillairflow.com

### Iowa

□ 900 Pinder Avenue  
Grinnell, IA 50112  
641/236-6728  
Fax: 641/236-7352  
iowaplant@mcgillairflow.com

### Kentucky

□ 3300 Ruckriegel Parkway  
No. 108  
Louisville, KY 40299  
502/266-8939  
Fax: 502/266-9957  
louisville@mcgillairflow.com

### Maryland

□ 9210 Hampton Overlook  
No. B-6  
Capitol Heights, MD 20743  
301/324-2284  
Fax: 301/324-0048  
baltimore-washington@mcgillairflow.com

### Massachusetts

□ 2J Gill Street  
Woburn, MA 01801  
781/939-0797  
Fax: 781/939-0931  
boston@mcgillairflow.com

### Michigan

□ 32713 Schoolcraft Road  
No. 107  
Livonia, MI 48150  
734/266-4169  
Fax: 734/266-4182  
detroit@mcgillairflow.com

### New Jersey

40 Baldwin Road  
No. 4  
Parsippany, NJ 07054  
973/334-9440  
Fax: 973/334-9518  
newyork@mcgillairflow.com

### New York

□ 2100 Brighton Henrietta  
Town Line Road  
Rochester, NY 14623  
585/475-1470  
Fax: 585/475-1477  
rochester@mcgillairflow.com

### North Carolina

□ 2748-G Interstate Street  
Charlotte, NC 28208  
704/393-1056  
Fax: 704/393-0873  
charlotte@mcgillairflow.com

□ 2201 Brentwood Road  
No. 105  
Raleigh, NC 27604  
919/790-9888  
Fax: 919/790-7161  
raleigh@mcgillairflow.com

### Ohio

□ 2400 Fairwood Avenue  
Columbus, OH 43207  
614/443-5520  
Fax: 614/542-2620  
ohioplant@mcgillairflow.com

□ 485 Ken-Mar Industrial Pkwy.  
Broadview Heights, OH 44147  
440/546-4454  
Fax: 440/546-4933  
cleveland@mcgillairflow.com

□ 2954 East Crescentville Road  
West Chester, OH 45069  
513/771-5111  
Fax: 513/771-8887  
cincinnati@mcgillairflow.com

### Pennsylvania

□ 307 East Church Road  
No. 7  
King of Prussia, PA 19406  
610/292-8087  
Fax: 610/292-8204  
philadelphia@mcgillairflow.com

2593 Wexford Bayne Road  
No. 101  
Sewickley, PA 15143  
724/934-0466  
Fax: 724/934-0170  
pittsburgh@mcgillairflow.com

### South Carolina

□ 300 Dale Drive  
Fountain Inn, SC 29644  
864/862-4463  
Fax: 864/862-5408  
s.carolinaplant@mcgillairflow.com

### Tennessee

□ 614 Airpark Center Drive  
Nashville, TN 37217  
615/366-3191  
Fax: 615/366-3715  
nashville@mcgillairflow.com

### Texas

□ 206 Pecos Street  
Hillsboro, TX 76645  
254/582-5392  
Fax: 254/582-2426  
texasplant@mcgillairflow.com

□ 2550 114th Street  
No. 160  
Grand Prairie, TX 75050  
972/606-8553  
Fax: 972/606-8711  
dallas-ft.worth@mcgillairflow.com

□ 2523 Fairway Park Drive  
No. 520  
Houston, TX 77092  
713/680-3771  
Fax: 713/680-8037  
houston@mcgillairflow.com

□ 12961 Park Central  
No. 1420  
San Antonio, TX 78216  
210/402-0122  
Fax: 210/402-0543  
sanantonio@mcgillairflow.com

### Vermont

□ 452 Harwood Hill Road  
Bennington, VT 05201  
802/442-8536  
Fax: 802/442-9437  
vermontplant@mcgillairflow.com

### Virginia

□ 9415 Atlee Commerce  
Center Boulevard  
Suite I  
Ashland, VA 23005  
804/550-7780  
Fax: 804/550-7787  
richmond@mcgillairflow.com

### Washington

258 SW 43rd Street  
Building 3  
Suite M-A  
Renton, WA 98055  
425/251-9880  
Fax: 425/251-9891  
seattle@mcgillairflow.com

### Wisconsin

□ N56 W 13555 Silver Spring  
Drive  
Menomonee Falls, WI 53051  
262/252-3249  
Fax: 262/252-3254  
milwaukee@mcgillairflow.com

### AirFlow/Acoustical Laboratory

190 East Broadway  
Westerville, OH 43081  
614/882-5455  
Fax: 614/797-2175  
mafengineering@mcgillairflow.com

### Corporate Headquarters

One Mission Park  
Groveport, OH 43125  
614/836-9981  
Fax: 614/836-9843  
marketing@mcgillairflow.com

### Note:

McGill AirFlow Corporation also has sales representatives in other major cities.

### KEY

- Manufacturing Plant
- Also a Duct Express Outlet

**McGill AirFlow**  
Corporation

An enterprise of United McGill Corporation — Founded in 1951

Web site: [www.mcgillairflow.com](http://www.mcgillairflow.com)